

Manufacturers of Industrial Ice Machines

A&V

REFRIGERATION

The A&V Making Principle

In the A&V Ice Maker, ice is produced on vertically suspended, double-walled cylindrical evaporators. Chilled water is continually recirculated over the inner and outer surface of the evaporator as refrigerant passes utilizes 100% of the evaporator surface and provides fast production with maximum efficiency of heat exchange. Ice making water is recirculated by a pump from the stainless steel sump, where proper water level is maintained by a float valve. Water flows onto the inner and outer evaporator surface by simple tubed water distributors. The freezing and defrost cycles are determined by two timers, one for each correspondent cycle. When the ice has reached its desired thickness, hot gas from the compressor is introduced into the annular space. The introduction of hot gas “breaks the ice bond” from the evaporator surface, releasing the concentric cylinders of ice, which fall by gravity into the ice breaker/crusher assembly. The rotation of the ice breaker delivers the ice across the grid and discharges it into the storage bin or bunker.

The Machine

No moving parts in freezing zone

No augers, gears, gear motors or seals to give you problems. Gravity harvest ice on both sides of the vertical tube evaporator.

Double surface freezing

Evaporators are constructed using a vertical tube design which allows ice to form on both the inside and outside wall of the evaporator for maximum efficiency and fast recovery.

All purpose ice

The A&V stainless steel crusher design eliminates fine ice or snow. The ice produced is hard, dry, pure cracked/fragmented ice... an all purpose ice concave in structure with no two pieces exactly alike. The curved design provides more cold-producing surfaces giving immediate, longer lasting cooling.

Standard parts

With the exception of the evaporator, most all major component parts are readily available if needed at local refrigeration supply wholesalers. Although the factory has a full stock of replacement parts, down time is eliminated by the design feature of using standard parts that are stocked by nationwide wholesalers.

Service

The simplicity of design of the A&V ice maker eliminates major problems... routine maintenance can be performed by almost anyone. Every unit is carefully shop-tested and approved before shipment and only the easily accessible float tank assembly needs cleaning.

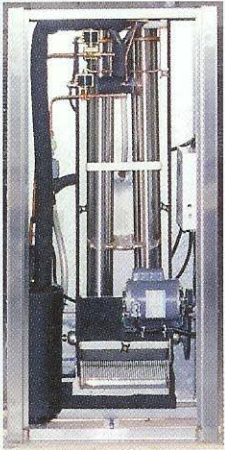
Thoroughly tested

Years of building A&V equipment the right way doesn't stop us from putting each unit on the testing rack to make sure the components function properly within the total system. And because there are thousands of units out there delivering tons of dependable ice, you are assured of a design and a company with a “Quality Conscience”.

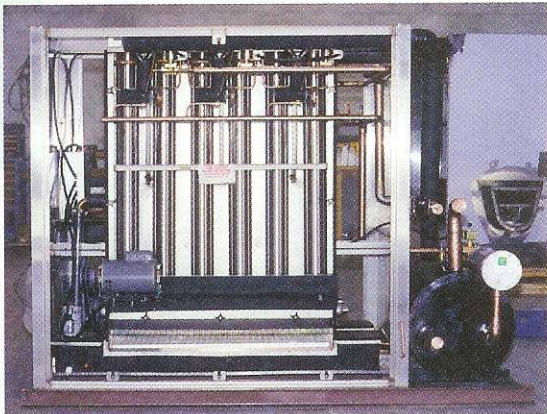


A&V Ice Makers produce a hard cracked ice ideal for seafood & poultry, fresh vegetable processing, industrial catering, the chemical & concrete business, plus the wholesale and retail food industries. Thickness of the ice is adjustable from 1/8" to 5/8", allowing for great flexibility.

Reliability and simplicity are the words which best describe these machines. The evaporator sections are all stainless steel! Evaporator tubes themselves, plus frame, panels and ice cutter are made entirely from type 304 stainless steel. Our control system is simple and flexible, no added controls or electronics to create service headaches. No moving parts in the ice making zone, plus zero maintenance



bearings enhance reliability.



Capacities range from 2,000 lbs. to 40,000 lbs. per day under Florida conditions (90 Deg. air and 60 Deg. water). These machines are available in air-cooled remote, self contained air or water cooled.

All our ice makers are heavy duty industrial machines including the components we select plus the construction of the machine itself.



SPECIFICATIONS

Remote Operated Ice Machines						
Model No. →	AV020CR	AV040CR	AV060CR	AV120CR	AV200CR	AV400CR
Ice Production per day →	2,000 Lbs. (907 Kg)	4,000 Lbs. (1,270 Kg)	6,000 Lbs. (2,721 Kg)	12,000 Lbs. (5,443 Kg)	20,000 Lbs. (9,072 Kg)	40,000 Lbs. (18,144 Kg)
Evaporator Dimensions:						
Length:	28"	47"	60"	60"	76"	139"
Width:	19"	19"	19"	38"	36"	88"
Height:	57"	57"	57"	57"	57"	86"
Net Weight:	220 Lbs.	390 Lbs.	520 Lbs.	850 Lbs.	1,000 Lbs.	5,200 Lbs.
Condenser Dimensions:						
Length:	48"	60"	72"	112"	115"	96"
Width:	36"	36"	40"	48"	44"	48"
Height:	25"	25"	69"	57"	85"	43"
Compressor HP:	4	6.5	8	16	35	(2) 35
Net Weight:	350 Lbs.	500 Lbs.	610 Lbs.	1,250 Lbs.	2,800 Lbs.	1,330 Lbs.
Voltage:						
Evaporator Section:	230/60/1	230/60/1	230/60/1	230/60/1	230/60/1	230/60/1
Condenser Section:	230/60/1	230/60/3	230/60/3	230/60/3	230/60/3	230/60/3
Or:	230/3/60	460/60/3	460/60/3	460/60/3	460/60/3	460/60/3
Refrigerant: Freon 22, or R404-A						
Circuit Breaker:						
Size:	40 AMPs	40 AMPs	50 AMPs	100 AMPs	200 AMPs	320 AMPs
	30 AMPs					
Daily Water Usage:						
	240 gal. (908 Liters)	482 gal. (1,825 Liters)	723 gal. (2,737 Liters)	1,446 gal. (5,474 Liters)	2,400 gal. (9,085 Liters)	5,200 gal. (19,684 liters)
Self-Contained Ice Machines						
Model No. →	AV020C	AV040C	AV060C	AV120C	AV200C	AV400W
Ice Production per day →	2,000 Lbs. (907 Kg)	4,000 Lbs. (1,270 Kg)	6,000 Lbs. (2,721 Kg)	12,000 Lbs. (5,443 Kg)	20,000 Lbs. (9,072 Kg)	40,000 Lbs. (18,144 Kg)
Dimensions:						
Length:	71"	79"	67"	182"	200"	139"
Width:	29"	48"	63"	48 1/2"	48 1/2"	88"
Height:	60"	60"	60"	64"	64"	86"
Compressor HP:	4	6.5	8	16	35	75
Net Weight:	600 Lbs.	890 Lbs.	1,200 Lbs.	2,100 Lbs.	3,000 Lbs.	6,500 Lbs.
Voltage:						
	230/60/1	230/60/1	230/60/1	230/60/1	230/60/1	230/60/1
Or	230/60/3	230/60/3	230/60/3	230/60/3	230/60/3	230/60/3
	460/60/3	460/60/3	460/60/3	460/60/3	460/60/3	460/60/3
	380/50/3	380/50/3	380/50/3	380/50/3	380/50/3	
Refrigerant: Freon 22, or R404-A						
Circuit Breaker:						
Size:	40 AMPs	40 AMPs	50 AMPs	100 AMPs	200 AMPs	300 AMPs
	30 AMPs					
Daily Water Usage:						
	240 gal. (908 Liters)	482 gal. (1,825 Liters)	723 gal. (2,737 Liters)	1,446 gal. (5,474 Liters)	2,400 gal. (9,085 Liters)	5,200 gal. (19,684 Liters)

*Due to A&V's dedication to product improvement, specifications and prices may change without notice.